

### Operating data

Flow	135,4 l/s
Head	40,1 m
Shaft power P2	69,1 kW
Pump efficiency	77,9 %
Required pump NPSH	3,4 m
Pumpe type	Single pump
No. of pumps	1
Fluid	Wastewater

### Pump

Pump Code	KX4476-HL264
Impeller	Multi channel impeller
Impeller size	380 mm
Solid size	100 mm
Discharge port	DN200
Suction port	DN200

### Motor

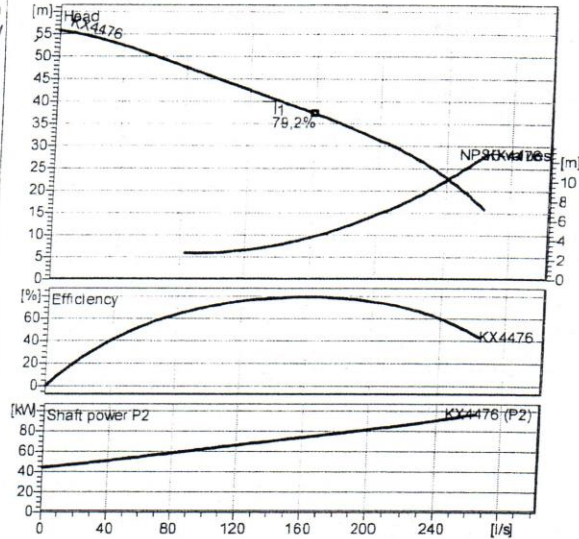
Rated voltage	400 V
Frequency	50 Hz
Rated power P2	105,0 kW
Rated speed	1470 1/min
Number of poles	4
Efficiency	92 %
Rated current	189 A
Degree of protection	IP 68

### Materials

Motor housing	Grey cast iron GGG25
Impeller	Grey cast iron GGG40
Pump housing	Grey cast iron GGG40
Wear ring	Stainless steel
Motor shaft	Stainless steel 1.4021
Bolts	Stainless steel
Motor jacket	Stainless steel
Elastomeres	Nitrile Rubber

Mechanical seal on motor side	SiC / SiC
Mechanical seal on medium side	SiC / SiC
Lower Bearing	Two angular ball bearings
Upper Bearing	Deep Groove Ball Bearing

Testnorm: ISO 9906/A



Wet well installation with coupling kit DN250 (KX44(76-83)-HU...4)  
Dimensions in mm, letters see table

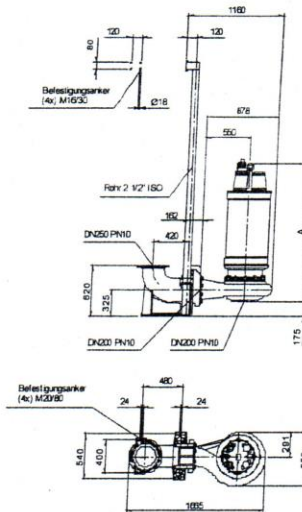


Table Dimensions (mm)

A 1523

2.0 - 29.01.2009 (Build 166)

Project Kisl	Project no.: PS-N6	Created by: HOMA	Page: 1	Date: 2010-06-04
-----------------	-----------------------	---------------------	------------	---------------------



# Performance Curve

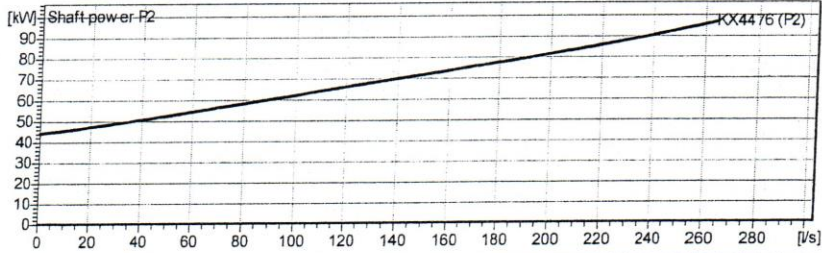
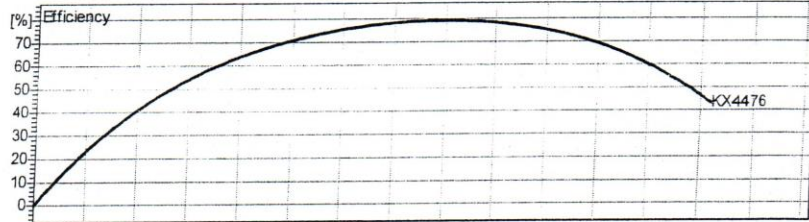
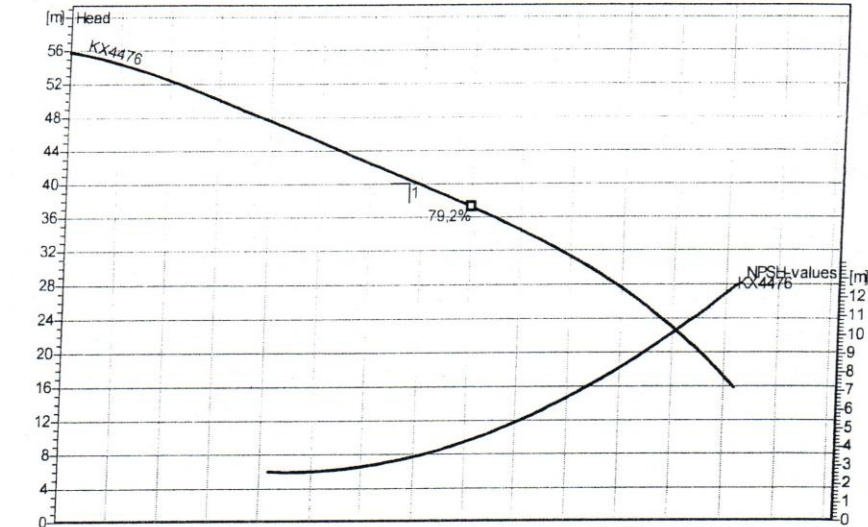
KX4476-HL264

PS-N6

Impeller					
Impeller type Multi channel impeller	Solid size 100 mm	Ø 415 mm	Max. Ø 415 mm	Min Ø 320 mm	Sel Ø 380 mm

Operating data					
Speed: 1470 1/min.	Frequency: 50 Hz	Duty point Q = 135,4 l/s	H = 40,06 m	Shaft power P2: 69,1 kW	Discharge port: DN200

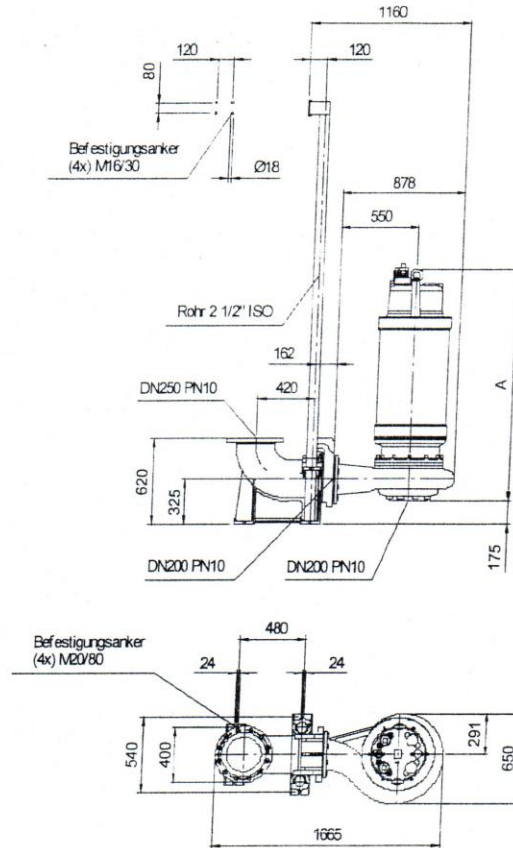
Power data referred to: Water, clean [100%], 20°C, 0,9983kg/dm³, 1,005mm²/s Testnorm ISO 9906/A



2.0 - 26.01.2008 (Build 166)

Project Kisi	Project no.: PS-N6	Created by: HOMA	Page: 2	Date: 2010-06-04
-----------------	-----------------------	---------------------	------------	---------------------

Wet well installation with coupling kit DN250 (KX44(76-83)-HU. 4)  
 Dimensions in mm, letters see table



**Table Dimensions ( mm )**

A	1523
---	------

2.0 - 29.01.2009 (Build 166)

Project Kisl	Project no.: PS-N6	Created by: HOMA	Page: 3	Date: 2010-06-04
-----------------	-----------------------	---------------------	------------	---------------------



### Technical Data

KX4476-HL264

PS-N6

Operating data				
Flow	135,4	l/s	Head	40,06 m
Shaft power P2	69,1	kW	Static head	0 m
Pump efficiency	77,9	%	Required pump NPSH	3,4 m
Pumpe type	Single pump		No. of pumps	1
Fluid	Wastewater		Temperature	30 °C
Density	0,9983	kg/dm³	Kin. viscosity	1,005 mm²/s

Pump				
Pump Code	KX4476-HL264		Speed	1470 1/min
Suction port	DN200	Head	Max.	55,8 m
Discharge port	DN200		Min.	15,9 m
Impeller type	Multi channel impeller		Flow	Max. 263,9 l/s
Solid size	100	mm	Pump efficiency max.	79,2 %
Impeller Ø	380	mm	Required rated power max. P2	96,7 kW

Motor				
Motor design	Submersible motor		Insulation class	F
Motor name	AM 376.114/4 H		Degree of protection	IP 68
Frequency	50	Hz	Temperature class	T4
Rated power P1	114,1	kW	Ex	-
Rated power P2	105,0	kW	Explosion protection	
Rated speed	1470	1/min	Efficiency at % rated power	100% 92 %
Rated voltage	400	V 3~		75% 92 %
Rated current	189,0	A		50% 91 %
Starting current, direct starting	1304,1	A	cos phi at % rated power	100% 0,87
Starting current, star-delta	434,7	A		75% 0,84
Starting mode	Star-delta			50% 0,76
Power cable	2x4G35		Control cable	5G1,5
Type of power cable	H07RN-F PLUS		Type of control cable	H07RN-F
Cable length	10 m		Service factor	1,15
Shaft seal	Mechanical seal on motor side		SiC / SiC	
	Mechanical seal on medium side		SiC / SiC	
Bearing	Lower Bearing		Two angular ball bearings	
	Upper Bearing		Deep Groove Ball Bearing	
Remarks				

Materials / Weight			
Motor housing	Grey cast iron GG25	Bolts	Stainless steel
Pump housing	Grey cast iron GGG40	Elastomers	Nitrile Rubber
Impeller	Grey cast iron GGG40	Motor jacket	Stainless steel
Wear ring	Stainless steel		
Motor shaft	Stainless steel 1.4021		
Weight aggregat	980 kg		

2.0 - 29.01.2009 (Build 168)

Project Kisl	Project no.: PS-N6	Created by: HOMA	Page: 4	Date: 2010-06-04
-----------------	-----------------------	---------------------	------------	---------------------